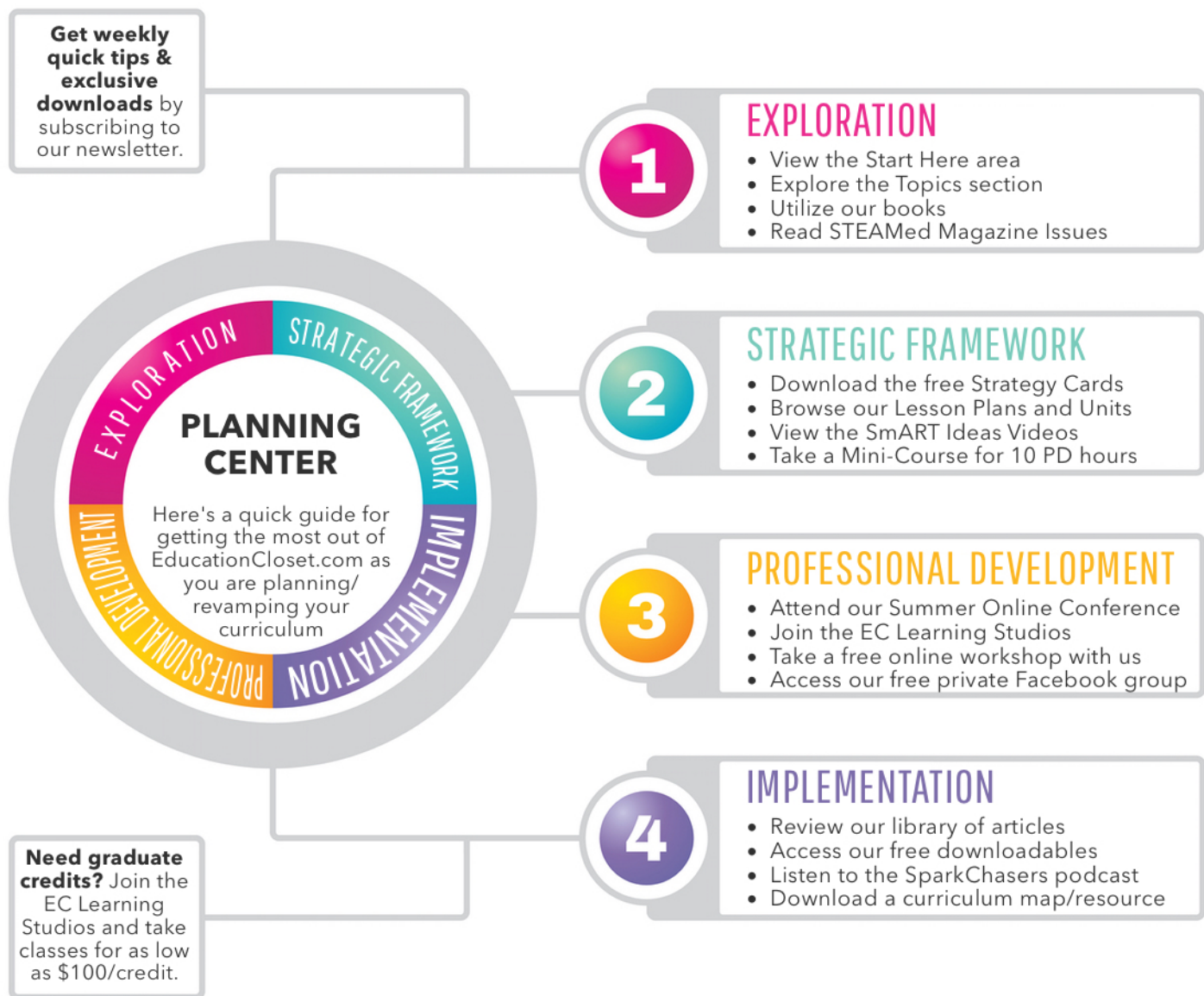


USING EDUCATIONCLOSET IN YOUR PLANNING PROCESS



PLANNING QUICK TIPS:

1. Pick your cornerstone of arts integration and STEAM: Exploration, Strategic Framework, PD or Implementation. These are the stages of the integration process. Select the one which most closely aligns with your current level of integration.
2. Start with using the free resources we've outlined in each cornerstone.
3. Once you're ready to move into more in-depth resources and training, select from the paid resources we've outlined.
4. Don't try to tackle every cornerstone all at once! Start where you are comfortable and move up from there.